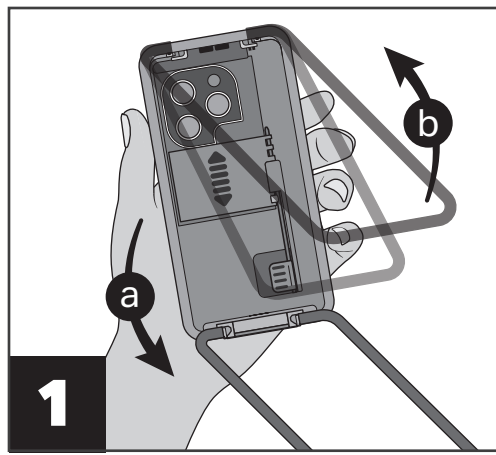




Case For Vision

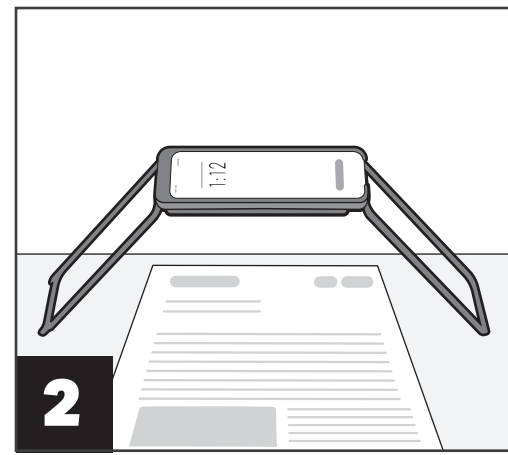
Quick Start Guide: Magnifier Mode

Magnifier Mode allows you to magnify objects and materials on a sturdy surface. Use live pan and zoom without moving the materials or camera.



Hold the phone facing its back.

- a. Unfold the first leg from the top camera side.
- b. Unfold the second leg from the bottom side.

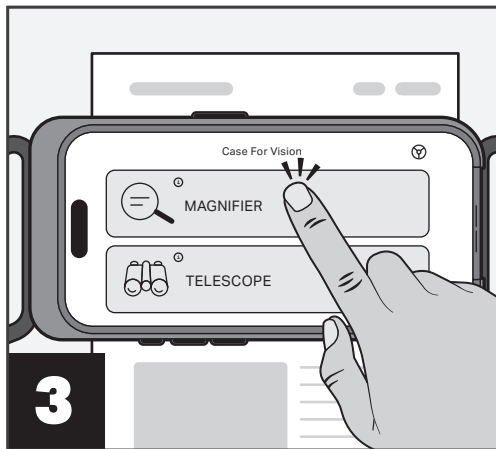


Place the phone horizontally (landscape mode) on a sturdy surface.

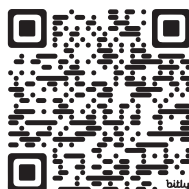
 Case For Vision

Scan the QR code to watch a full video tutorial.

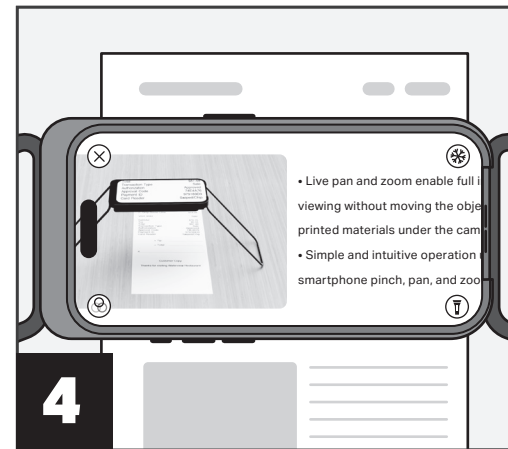
www.caseforvision.com
contact@caseforvision.com







Open the Case For Vision App and tap the "Magnifier" button.



Scan here to install app.



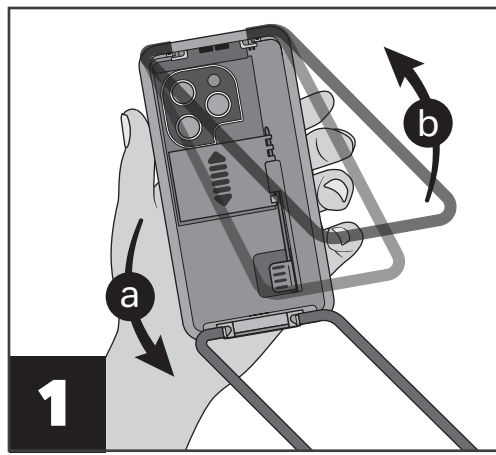
Utilize smartphone pinch, pan, and zoom gestures.

-  Exit Magnifier Mode
-  Contrast
-  Freeze / Unfreeze
-  Flashlight

Case For Vision

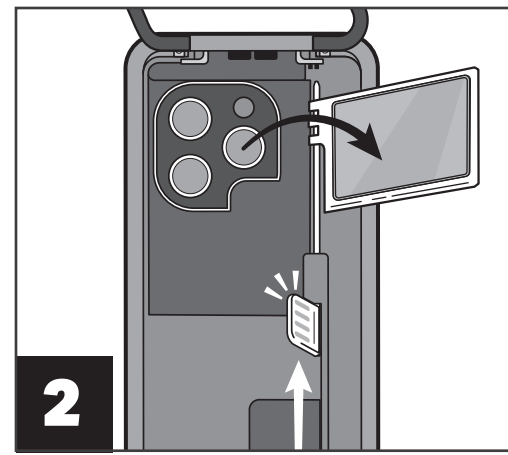
Quick Start Guide: Telescope Mode

Telescope Mode allows you to view remote objects magnified. Mirror your magnified screen to a larger display, tablet, TV or a computer.

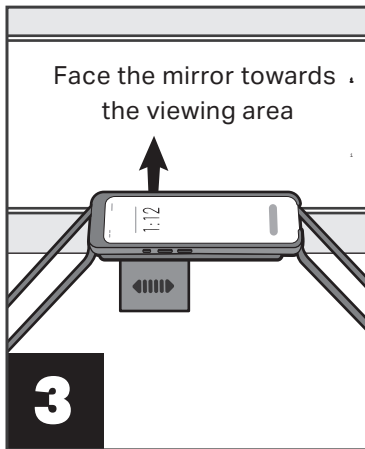


1 Hold the phone facing its back.

- a. Unfold the first leg from the top camera side.
- b. Unfold the second leg from the bottom side.

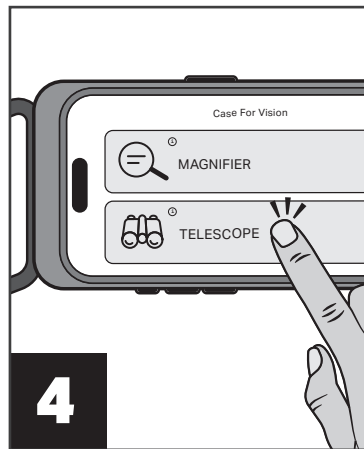


2 Push the optical mirror mechanism's grooved flag forward until it stops.



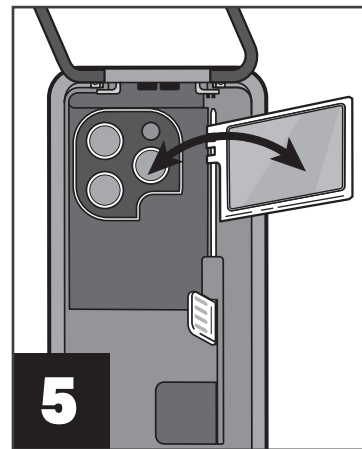
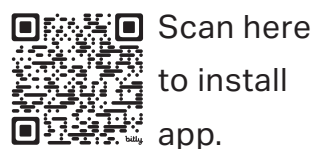
3

Place the phone horizontally (landscape mode) on a sturdy surface with the optical mirror facing away from you, towards the viewing area.



4

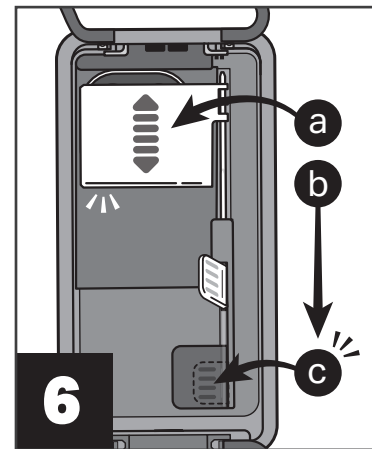
Open the Case For Vision App and tap the "Telescope" button.



5

Adjust the mirror angle when needed.

- ⊗ Exit
- ⊙ Contrast
- ❄ Freeze / Unfreeze
- 📹 Record Video



6

Return mirror to store position:

- a. Push the mirror down flat.
- b. Pull the mirror mechanism's flag down until it stops.
- c. Push the flag down flat.